

# **INDOFINE Chemical Company, Inc.**

121 Stryker Lane, Bldg. 30, Suite 1 • Hillsborough, NJ 08844 • U.S.A.

Phone: (908) 359-6778 • FAX: (908) 359-1179

website: [www.indofinechemical.com](http://www.indofinechemical.com)

e-mail: [chemical@indofinechemical.com](mailto:chemical@indofinechemical.com)

## CERTIFICATE OF ANALYSIS

Catalog Number: 020101S

Product Name: **GINSENOSE Rg1 with HPLC**

Cas Number: [22427-39-0]

Lot Number: 2010480

Chemical Formula:  $C_{42}H_{72}O_{14}$

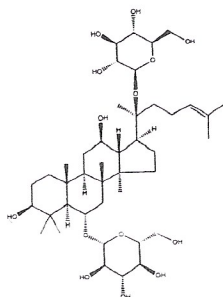
Molecular Weight: 801.02

Appearance: Off-white powder

Water Content: 1.40%

Storage: Store at 2-8°C. Protect from light.  
This product is stable at ambient temperature for several weeks. However, optimum long-term storage may require lower temperature (<-18°C). Place in a desiccator under vacuum before use.

Purity(HPLC): 99.75%



Prepared by:  
*Ramesh Mandadi*  
Ramesh Mandadi  
Director of Operations

Reviewed and approved by:  
*Sujata Moton*  
S. Moton  
VP



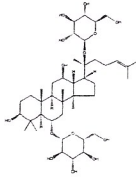
# INDOFINE Chemical Company, Inc.

121 Stryker Lane, Bldg. 30, Suite 1 • Hillsborough, NJ 08844 • U.S.A.

Phone: (908) 359-6778 • FAX: (908) 359-1179

website: [www.indofinechemical.com](http://www.indofinechemical.com)

e-mail: [chemical@indofinechemical.com](mailto:chemical@indofinechemical.com)



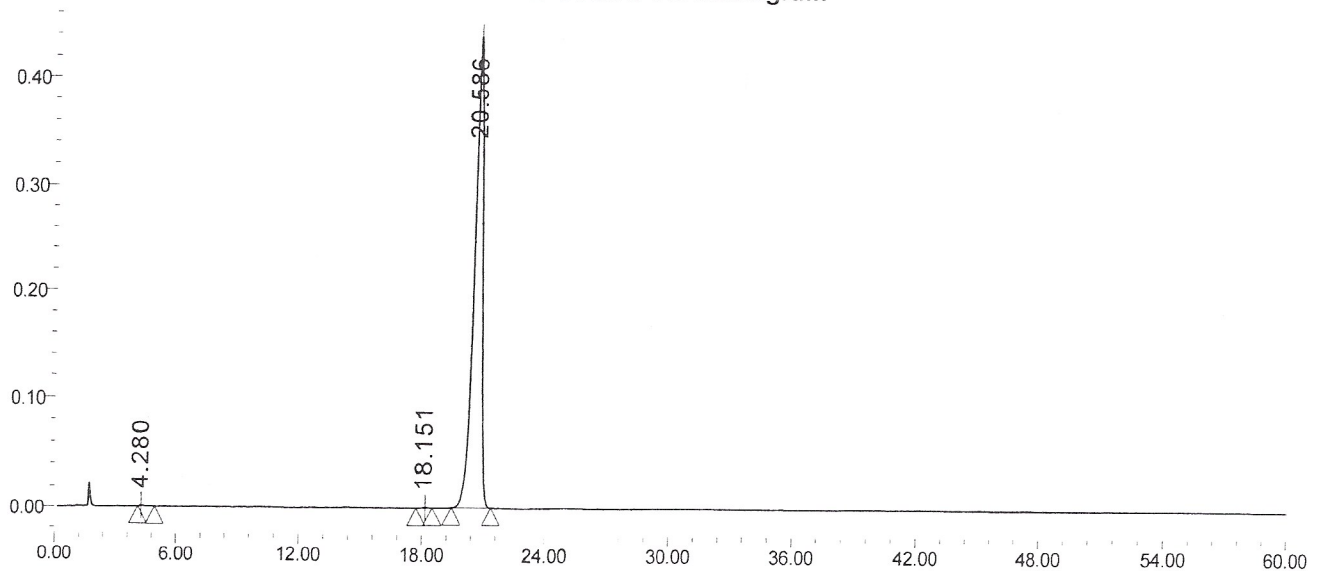
## HPLC ANALYSIS

Catalog No.: 020101S  
Product Name: Ginsenoside Rg1  
Lot No.: 2010480

### SAMPLE INFORMATION

Sample Name:	Ginsenoside Rg1	Acquired By:	PRF01
Sample Type:		Sample Set Name	
Vial:	95	Acq. Method Set:	Ginsenoside Rg1
Injection #:	3	Processing Method	sample
Injection Volume:	20.00 ul		
Run Time:	60.0 Minutes		

Auto-Scaled Chromatogram



Peak Results

	RT	Area	% Area	Height	Plate Count	Resolution
1	4.280	14676	0.12	777	1566.61	
2	18.151	15639	0.13	727	8852.71	24.00
3	20.586	12179250	99.75	438714	13411.09	3.26